

Sales, Development, Management



Sky West Real Estate Services, LLC  
3550 W. 6th Street, Suite 400, Los Angeles, CA 90020

[www.skywestservices.com](http://www.skywestservices.com)  
800.276.8787 Ext 201

---

**For Sale:**  
**15101 Mulholland Drive**  
**Bel Air, CA 90077**  
**\$1,450,000 - SOLD**

**For Further Information Please Contact:**  
**Jeffrey Lowden, Broker**  
**800.276.8787 Ext. 201**

**SOLD**  
**.35 acre**  
**Sold with Plans and Permits**  
**30-Day Close All Cash**

Description: Los Angeles, CA Assessor Map 2279.26 Page: 1 of 1  
Order: 01-00000034290 Comment:

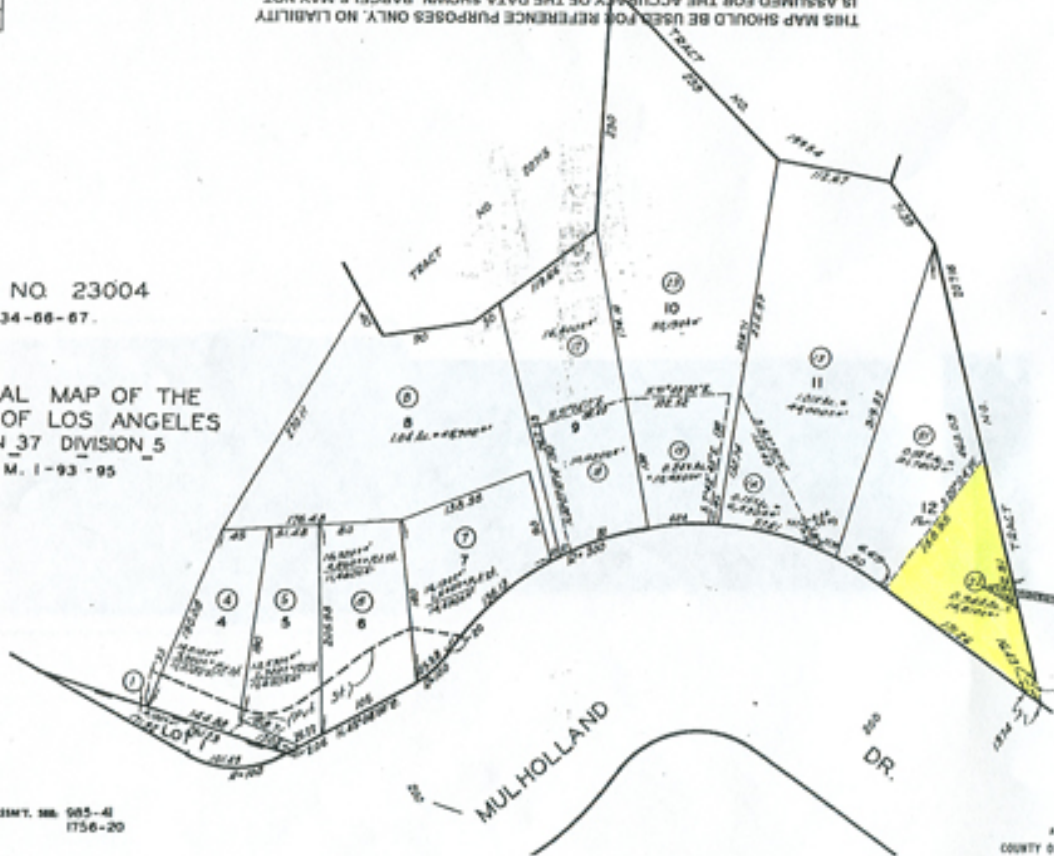
2279 26  
SCALE 1" = 60'

THIS MAP SHOULD BE USED FOR REFERENCE PURPOSES ONLY. NO LIABILITY IS ASSUMED FOR THE ACCURACY OF THE DATA SHOWN. PARCELS MAY NOT COMPLY WITH LOCAL SUBDIVISION OR BUILDING ORDINANCES.

REVISED  
1-20-93  
1-2-93  
1-2-93  
1-2-93

TRACT NO. 23004  
M.B. 634-66-67.

OFFICIAL MAP OF THE  
COUNTY OF LOS ANGELES  
REGION 37 DIVISION 5  
O.M. 1-93-95



15101  
MULHOLLAND  
DRIVE  
Bel Air  
CA  
90077

NO. 1297 FOR REV. ASMT. MB. 985-4  
1756-20

ASSESSOR'S MAP  
COUNTY OF LOS ANGELES, CALIF.